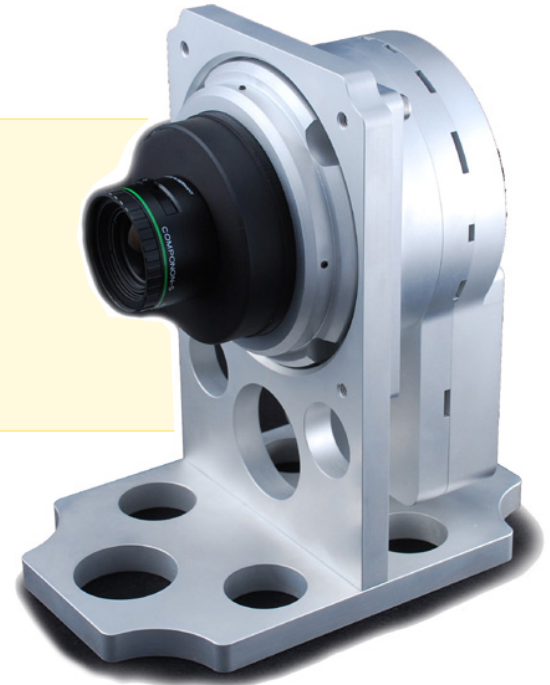


RMV-50M

* 8176 x 6132 * CL or GE
* Full Frame CCD camera



quality
innovation
reliability
performance



The **RMV-50M** is a 50 mega pixel digital camera used in industrial machine vision, military projects and scientific market applications. The RMV-50M offers an incredible resolution, with additional features such as full 14 bit sampling and 12 bit data paths, advanced triggering, sensor readout control, built-in detectors that analyze the camera's performance, and image processing to remove sensor pixel defects and column defects. Perfect for scientific applications, LCD inspection and machine vision systems.

The KODAK KAF-50100 image sensor is a 50 mega pixel Full Frame 6.0 micron CCD image sensor with an active image size of 49.1mm(H) x 36.8mm (V) (61.3mm diagonal).

The RMV-50M provides extreme performance at a very affordable price!

Highlights:

- 8176 x 6132 pixels with 6.0 um pixel size
- Monochrome, Bayer color
- Mechanical electronic shutter
- Full 14 bit sampling
- 8, 10, 12 bit selectable data output
- >70 dB dynamic range
- On Screen text and line plots
- Extended temperature range of 10C to +50C
- 1.1 frames per seconds
- Pixel and column defect correction
- Industrial components
- Camera link or Gigabit Ethernet
- Camera control GUI
- Binning modes
- Partial scan mode for higher frame rate
- Selectable clock speed
- Digital gain and offset
- Many customized features!

RMV-50M Specifications

Sensor	Kodak KAF-50100
Architecture	Full Frame CCD
Configuration	Mono, Bayer color
Active pixels	8176 (H) x 6132 (V)
Pixel size	6.0 x 6.0 μm
Active image size	49.1mm (H) x 36.8mm (V) (61.3mm diag) 4:3 aspect ratio
Outputs	2, or 4
Frame rate @ 30 Mhz	1.1 fps (quad) 0.6 fps (dual)
Dynamic range	70.2 dB
Clock speed	20, 30MHz
Blooming suppression	800x saturation exposure
Mechanical shutter	> 1.5 million cycles
Minimum exposure	0.5 ms
Read noise (f=18MHz)	< 12 electrons
Binning	1-16x Horizontal and Vertical
Partial scan	Any line to any line
Trigger modes	Free run, Free Run Synchronized, Triggered Program Exposure (TPE) Triggered Manual Exposure (TME)
Mount options	Schneider, Hasselblad, Rodenstock, Rollei, F-mount, OEM, custom mounts
Power with fan	12V DC@ 10W
Operating Temp	10C to 50C (camera link)
Weight without lens	4 lb (1814 grams)
Options	Call for OEM options

Software

All illunis cameras come with our free control application, which allows interactive setup of all camera parameters. The cameras can be configured using any terminal software that supports serial communication.

We specialize in custom OEM camera designs. Call us today to find out what we can do for you!

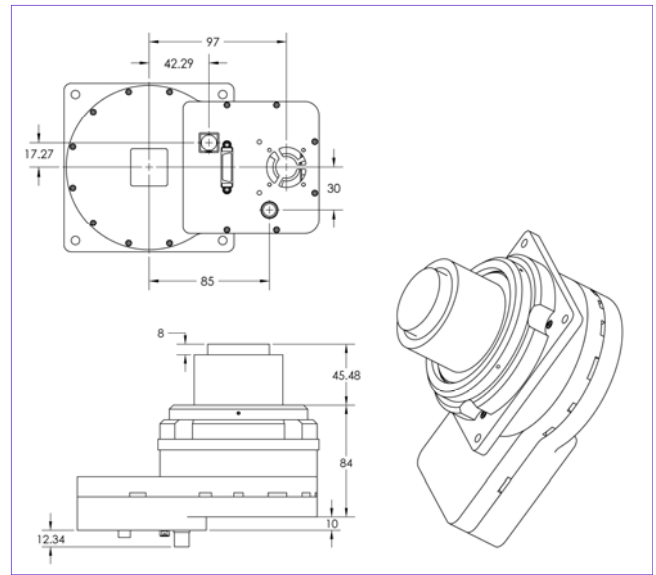
illunis LLC
14700 Excelsior Blvd
Minnetonka, MN 55345
USA

Phone: 952.975.9203
Fax: 952.294.8308
email: info@illunis.com
web: www.illunis.com

illunis Europe
Minervum 7069
4817 ZK Breda
The Netherlands

Phone: +31 76-544 0588
Fax: +31 76-541 7893
email: sales@illunis.eu
web: www.illunis.com

Dimensions



Applications

LCD inspection
Scientific imaging
Portrait photography
Traffic management
Military applications
Persistent Surveillance
PCB inspection

