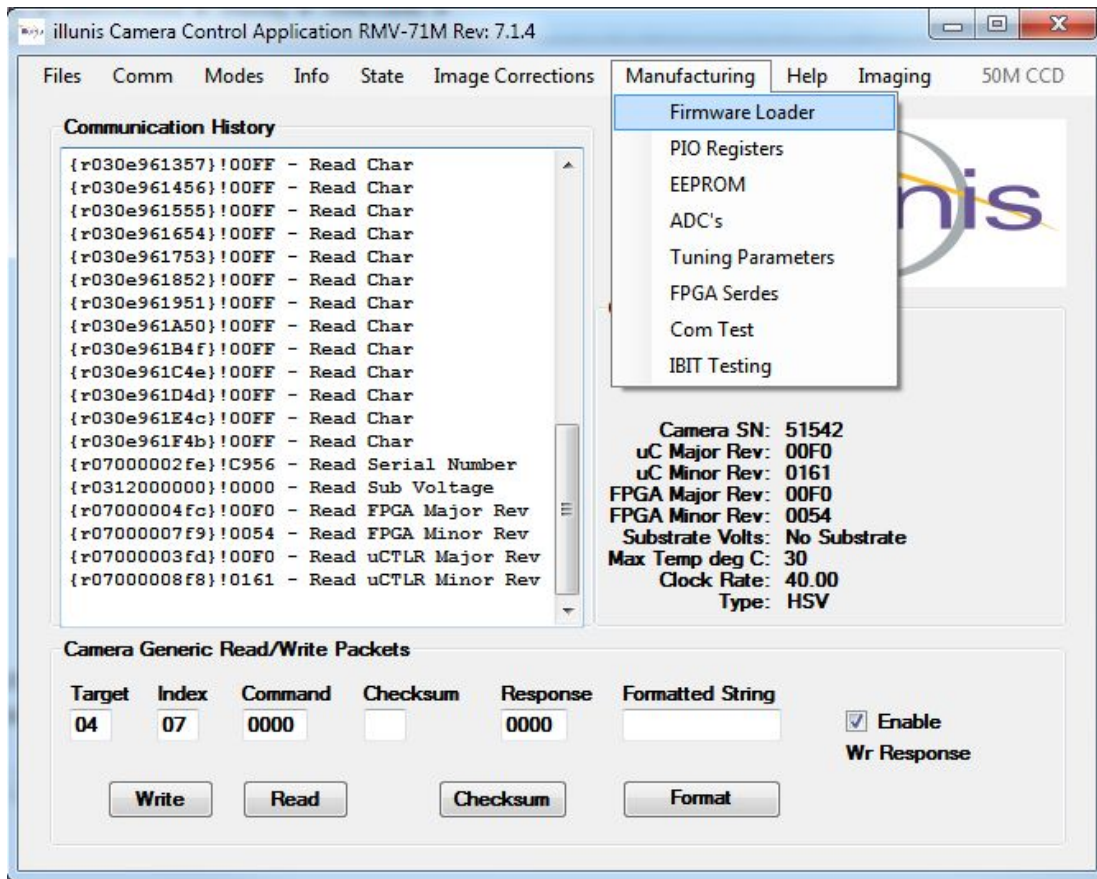




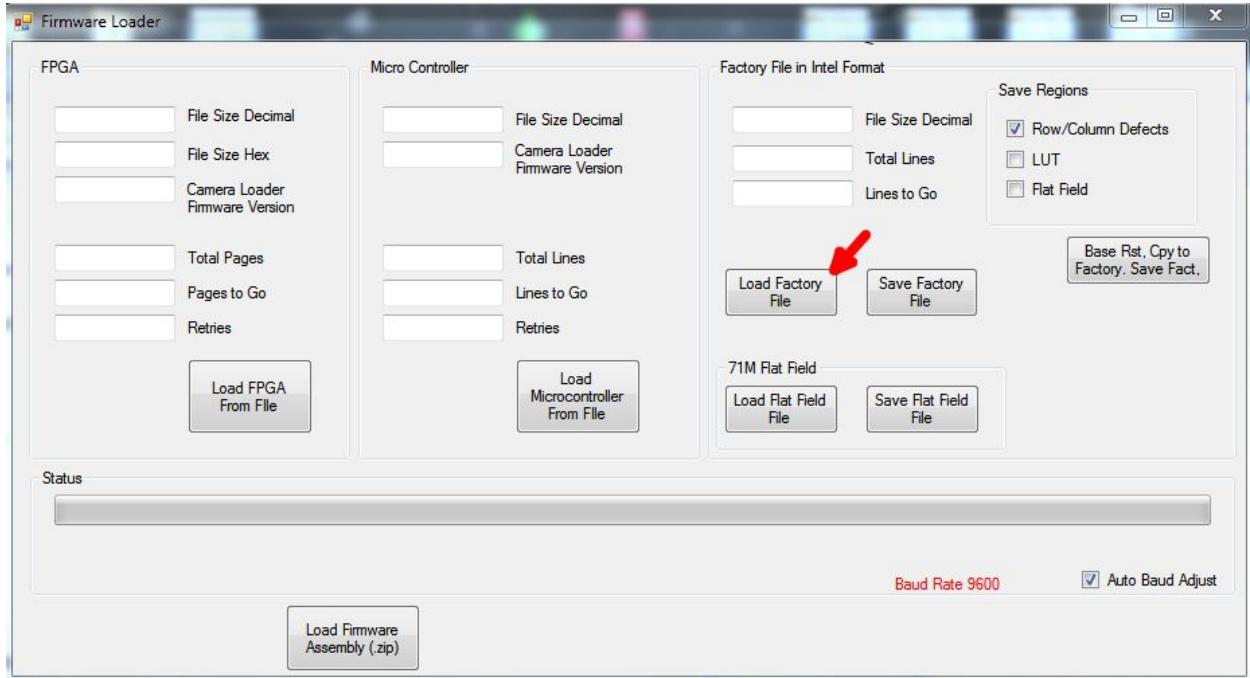
## How To Load Factory Files

Factory files can be found on Sharefile.com. These files are organized by purchase order and sales order, and are in a .zip. The illunis app will load the factory files directly from the zip file; therefore, the files do not need to be extracted.

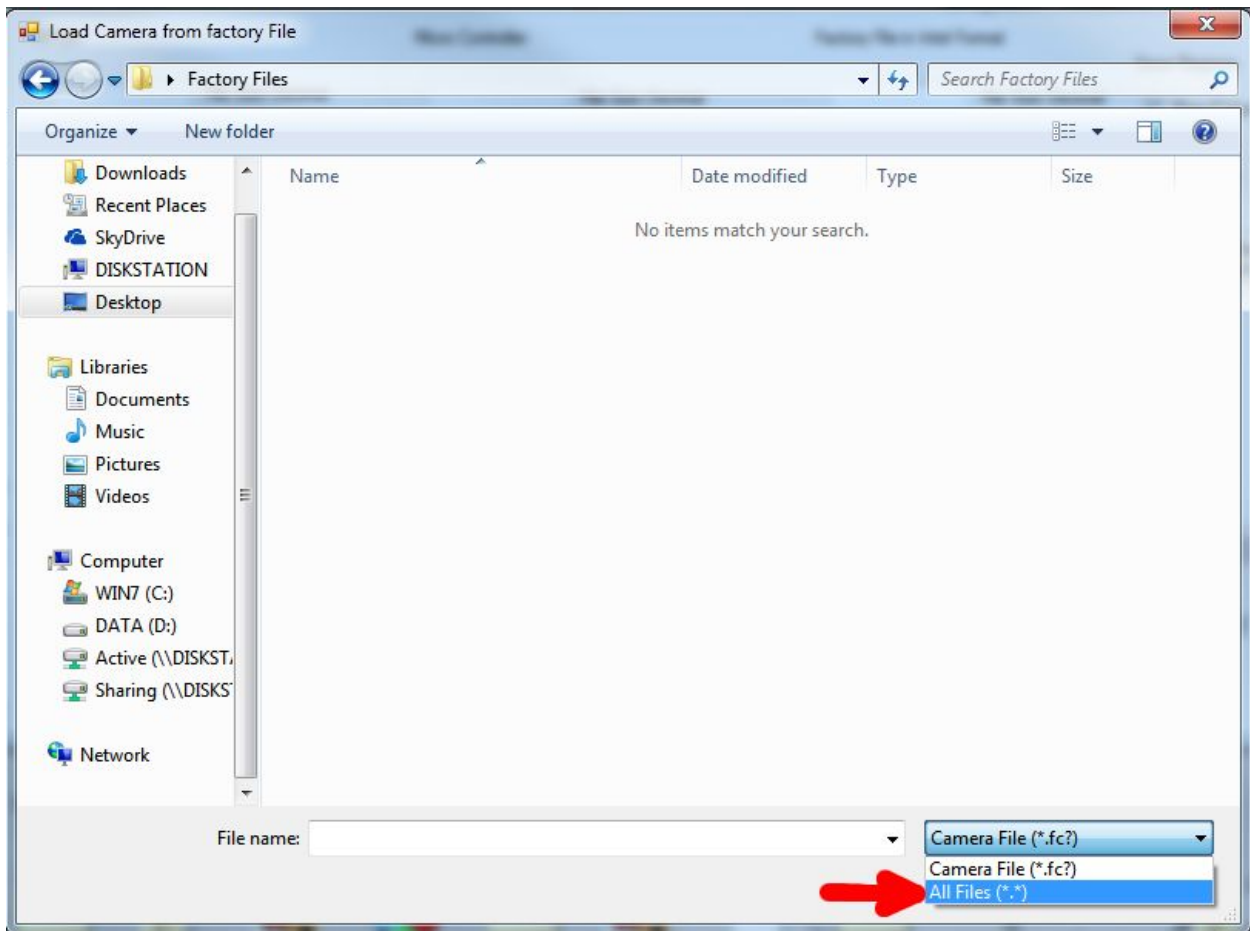
- 1) From the main window in the illunis app, first choose “Manufacturing” and then “Firmware Loader”.

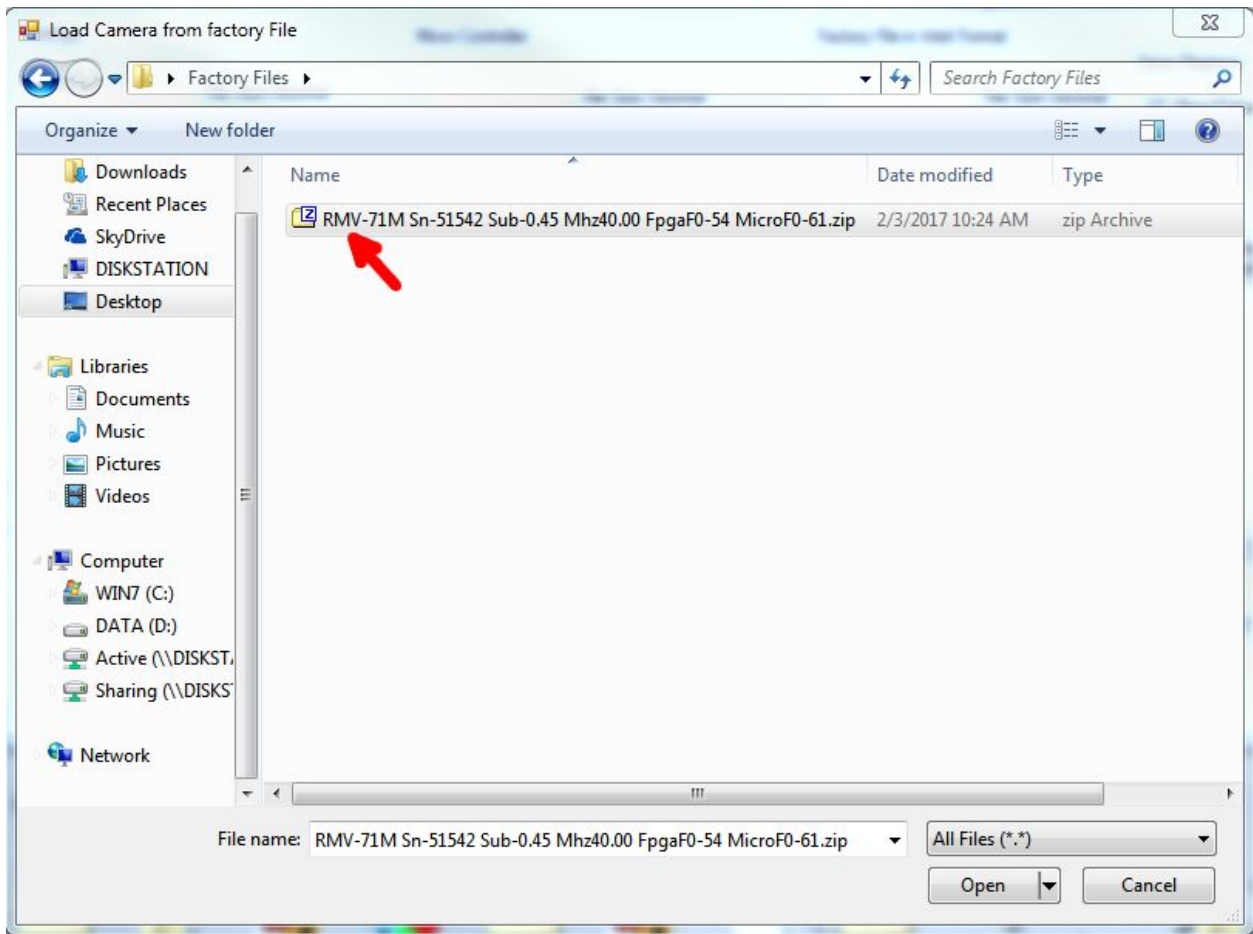


2) On the Firmware Loader screen click “Load Factory File”.

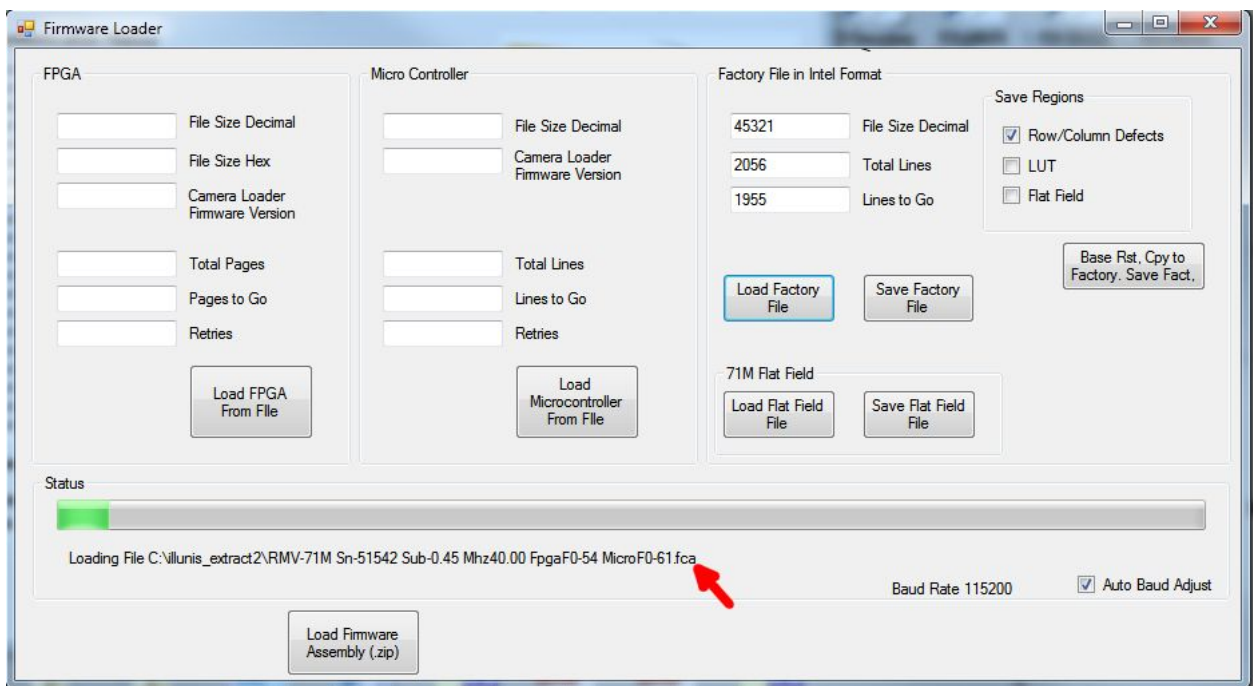


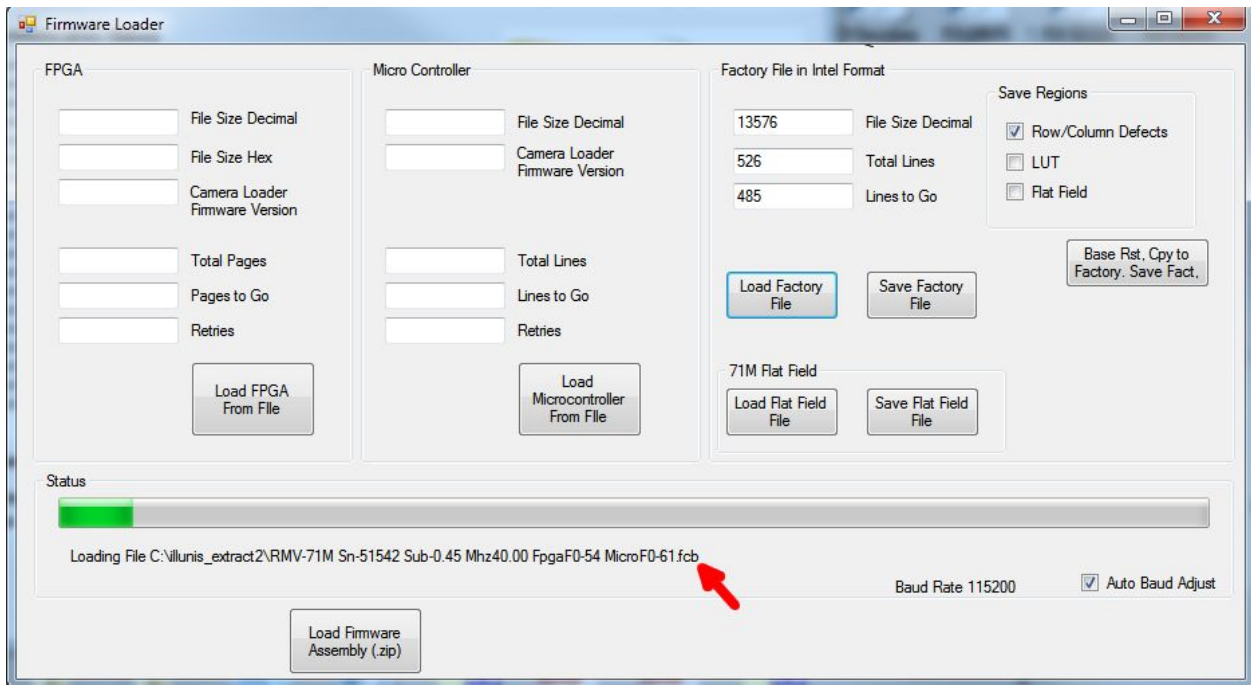
3) Choose the “All Files” type from the file selection window. Then select the factory file with the serial number that matches the camera that is being loaded.





4) The factory file will begin loading. The progress bar will complete twice, once for each file included in the zip file. **Do not turn off the camera or interrupt the loading process.**





5) A dialog box will pop-up and will inform the user that the file load is complete and that the “Lines to Go” will read 0. Click “OK”, close the illunis app, and repower the camera for the changes to take effect.

