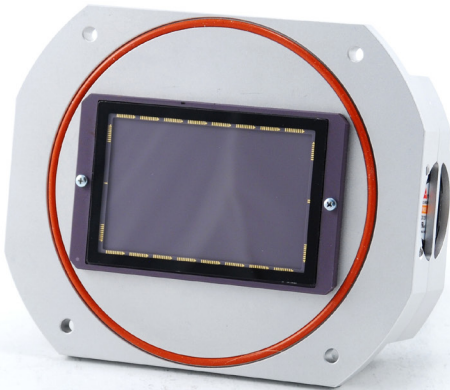




# RMV-47

*Interline Transfer CCD Sensor*

**8856 x 5280 5.5µm PIXEL**



*The RMV-47 is an 8 tap 47 megapixel digital camera. The RMV-47 is available in color and monochrome versions and is designed for use in industrial, machine vision, aerial imaging, military surveillance, and scientific applications.*

The RMV-47 uses the latest ON Semiconductor KAI-47051 Interline CCD Sensor. This camera features broad dynamic range, low noise, super low smear of -100dB, blooming suppression of >300x, full 12 bit data paths, advanced triggering, sensor readout control, built-in detectors that analyze camera and tap performance, and image processing to remove sensor pixel and column defects.

## **RMV-47 HIGHLIGHTS**

- ✓ 8856 x 5280 5.5µm active pixels
- ✓ Global electronic shutter
- ✓ Monochrome, RGB Bayer
- ✓ >64dB dynamic range
- ✓ 12 bits, 3.5 fps
- ✓ Pixel and column/FFC defect correction
- ✓ On Screen text and line plots
- ✓ Optional OLED display
- ✓ Forward Motion Compensation (FMC) readout mode
- ✓ Automatic tap balance
- ✓ OEM and array modules available

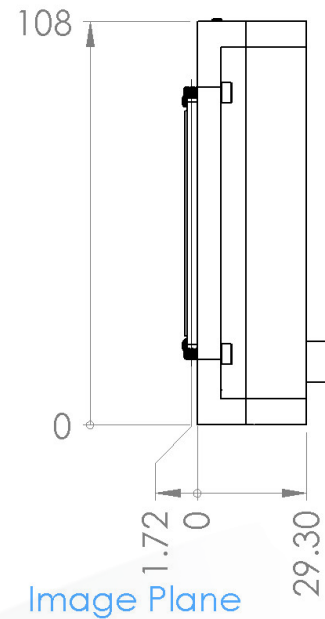
## RMV-47051 SPECIFICATIONS

Sensor	ON Semi KAI-47051
Architecture	Interline CCD, Progressive Scan
Configuration	Mono, RGB Bayer
Active Pixels	8856 (H) x 5280 (V)
Pixel Size	5.5 x 5.5µm
Active Image Size	Medium optical format (56.7mm diagonal)
Sensor Outputs	8 taps (left to right)
Frame Rates	3.5 fps base mode CL @ 85Mhz
Dynamic Range	64dB (Typical 70dB)
Pixel Clock Speed	42.5Mhz
Blooming Suppression	>300x
Electronic Shutter	> 10us (Global)
Smear	-100dB
Read Noise (f=40MHz)	12 electrons
Binning	Horizontal and Vertical
Forward Motion Compensation (FMC)	Any time, # of shifts to 65K
Readout Modes	Program Exposure, Pulse Width, Free Run, Forward Motion Compensation
Power (CL)	12W
Mount Options	M72, Pentax 645, OEM configuration
Operating Temp (CL)	-40°C to +85°C
Weight without lens	314 grams
Options	Call for OEM options

All illunis cameras come with our free camera control software, which allows interactive setup of all camera parameters.



## DIMENSIONS



## APPLICATIONS

- ✓ INDUSTRIAL
- ✓ MACHINE VISION
- ✓ AERIAL IMAGING
- ✓ MILITARY SURVEILLANCE
- ✓ SCIENTIFIC APPLICATIONS
- ✓ TRAFFIC MANAGEMENT
- ✓ FPD INSPECTION
- ✓ PCB INSPECTION
- ✓ PORTRAIT PHOTOGRAPHY

# Get in Touch

✉ [info@illunis.com](mailto:info@illunis.com)



### CONTACT US

illunis, LLC  
14700 Excelsior Boulevard  
Minnetonka, MN 55345 USA

☎ +1.952.975.9203  
☎ +1.952.294.8308 (fax)  
✉ [info@illunis.com](mailto:info@illunis.com)  
🌐 [www.illunis.com](http://www.illunis.com)