

illunis Canon Lens Controller



illunis CLC-USB
Canon Lens Controller
Manual



INTRODUCTION

This document details the setup and operation of the illunis CLC-USB Canon Lens Controller.

Rev	Date	Modification
A	4/26/19	First Revision
B	5/17/19	Revised to simplify Programming Interface
C	10/16/19	Added .dll
D	1/24/2020	Updated
E	8/27/2020	Updated for release firmware

Revisions



Table of Contents

Quick Start	4
Lens Control using Software	5
Lens Control using Terminal Emulator	7
CLC-USB Command Overview	8
CLC-USB Commands	12
Lens Info Commands	13
Aperture Commands	18
Focus Commands	20
Zoom Commands	22
EEPROM Commands	22
Firmware Update	24
Example Lens	26
.dll Commands	28

Important Note:

Older lenses require the lens switch to be in the Auto Focus (AF) position in order for the focus commands to function. Newer lenses will focus with the switch in either AF or Manual Focus (MF) positions.



General

The illunis CLC-USB Canon Lens Controller (CLC-USB) is a mechanical lens mount for a Canon EF lens with an integrated lens controller circuit board. The lens controller uses a virtual communication port to send and receive commands via a USB 2.0 connection to a computer.

USB Drivers

The lens controller USB 2.0 interface uses the FTDI FT231X USB to UART interface chip.

Drivers can be downloaded from this link:

<https://www.ftdichip.com/Drivers/VCP.htm>

Driver installation guides are available from this link:

<https://www.ftdichip.com/Support/Documents/InstallGuides.htm>

Comm Port Setup

The lens controller port settings are as follows:

Baud Rate: 57600

Parity: None

Data Bits: 8

Stop Bits: 1

Flow Control: None

Cables

The controller USB connector is USB C and any commercial USB cable may be used to connect the lens controller to the PC.



Lens Control using Software

Lens Control using Software

To assist with writing lens control software, illunis provides a lens control program example for Visual Studio C# as well as an installable executable version. The project source code and executable are available by request to info@illunis.com. A .Net .dll is available simplifying the configuration and communication to the lens.

Lens Control using a Terminal Program

Any lens command may simply be typed into a Terminal program such as Tera Term which is available here:

<https://osdn.net/projects/ttssh2/downloads/70691/teraterm-4.102.exe/>



Lens Control using Software Continued

Lens Control Application and Source Code

Step 1 Install USB Drivers

The first step in communicating with the lens controller is to install the USB communication drivers.

The lens controller USB 2.0 interface uses the FTDI FT231X USB to UART interface chip.

Drivers can be downloaded from this link:

<https://www.ftdichip.com/Drivers/VCP.htm>

Driver installation guides are available from this link:

<https://www.ftdichip.com/Support/Documents/InstallGuides.htm>

Step 2 Download illunis Lens Control Software

To assist with writing lens control software, illunis provides a lens control program example for Visual Studio C# as well as an installable executable version and lens control SDK.

The sample Visual Studio Project may be opened directly in Visual Studio and compiled. It is provided to show examples of the software interface implemented in order to reduce the time spent on writing application software.

A directly executable version of the application may be found in the /bin/x64/Release folder as CanonController.exe.



Lens Control using a Terminal Emulator

Lens Control using a Terminal Emulator

Step 1 Obtain and install a Terminal Emulation Program

Tera Term is a free Terminal Emulator for windows available here:

<https://osdn.net/projects/tssh2/downloads/70691/teraterm-4.102.exe/>

Drivers can be downloaded from this link:

<https://www.ftdichip.com/Drivers/VCP.htm>

Driver installation guides are available from this link:

<https://www.ftdichip.com/Support/Documents/InstallGuides.htm>

Step 2 Run the Terminal program and issue commands from this manual to control the lens



CLC-USB Command Overview

CLC-USB Command Overview

The CLC-USB is a mechanical lens mount for Canon EF lenses with an integrated controller. Please note the following important items:

The CLC-USB can be configured with USB or I2C interfaces.

The USB interface is controlled through a Windows Com Port at 57600 baud.

The USB 2.0 interface uses the FTDI FT231X USB to UART interface chip.

Drivers can be found here:

<https://www.ftdichip.com/Products/ICs/FT231X.html>

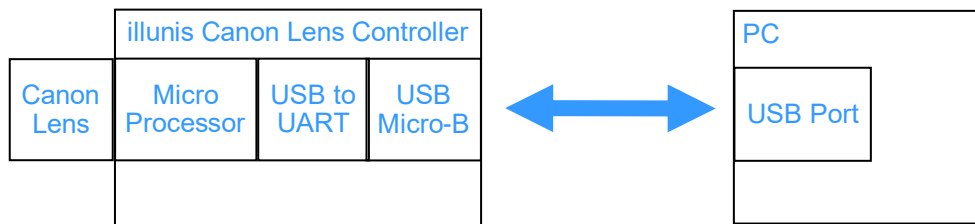
The USB connector powers the CLC-USB.

The I2C interface can be used with 1.5v, 1.8v, 2.5V, 3.3V and 5V busses.

UART COM 115,200 is not supported, 250,000 can be supported.



CLC-USB Port



CLC-USB Block Diagram



CLC-USB Command Overview Continued

The CLC-USB interfaces with the Canon EF mounted lens through a command protocol using a micro processor. The micro processor reads data from the EF lens, and commands the lens based on this information. The native lens data is described as follows:

Attaching a lens is detected by the micro processor and causes the lens to be initialized by the CLC-USB. This initialization performs the following: 1) The zero and infinity positions are set and the encoder positions are measured. 2) The lens status, flags and aperture information are read. 3) The lens internal type code and protocol is read and decoded.

Aperture data is measured in 1/8th F-Stop increments. The F-Stop data is accessed as 10x the value of the F-Stop; thus the value reported from the lens as F28 is actually F2.8. The aperture of the fully open and fully closed positions are provided by the lens.

Focus data is measured in lens encoder units. Individual lens types will have different encoder ranges reported by the lens. The encoder counts for infinity focus and zero focus and is measured from the lens when it is attached.

General purpose control signals are provide by the CLC-USB. There are two GPIO signals that can be set to an input or output at a TTL (5V) level. GPIO signals are accessed through an internal connector on the CLC-USB controller PCB.

The internal EEPROM in the CLC-USB microprocessor can be accessed by the user. EEPROM data is read and written as bytes. An EEPROM dump command is provided. The first 64 bytes of EEPROM is reserved for CLC-USB use. DO NOT WRITE to these locations.



CLC-USB Command Overview Continued

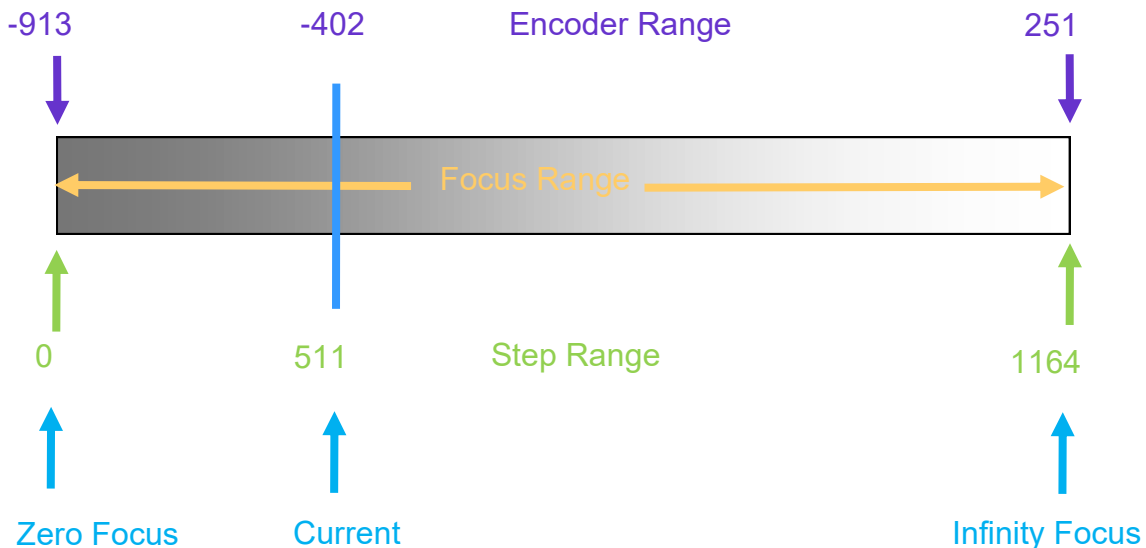
Focus Control:

The lens internal focus mechanism controls the focus position through a stepper or ultrasonic motor. The mechanism uses an encoder to determine its absolute position. The CLC-USB reads the encoder values and reports them in the 'ls' command. Encoder values can be negative and thus confusing to use. Please note that every lens has different encoder values.

To simplify focus control, the CLC-USB calculates the focus range in steps. This allows for control in the step based numerical range. The maximum step value can be read with the 'fs' command which returns #steps. A step value of 0 is equal to 'focus zero' and a step value of #steps is equal to 'focus infinity' using the 'fa' focus absolute command.

An additional command is provided to set the focus in percent of full range. This command is 'fc' <value> where value is between 0.0 and 100.0 in a float format.

The following diagram shows the encoder, focus and step control range concept.



Example of focus range values for the EF 50mm f/1.8 II lens.



CLC-USB Command Overview Continued

Aperture Control:

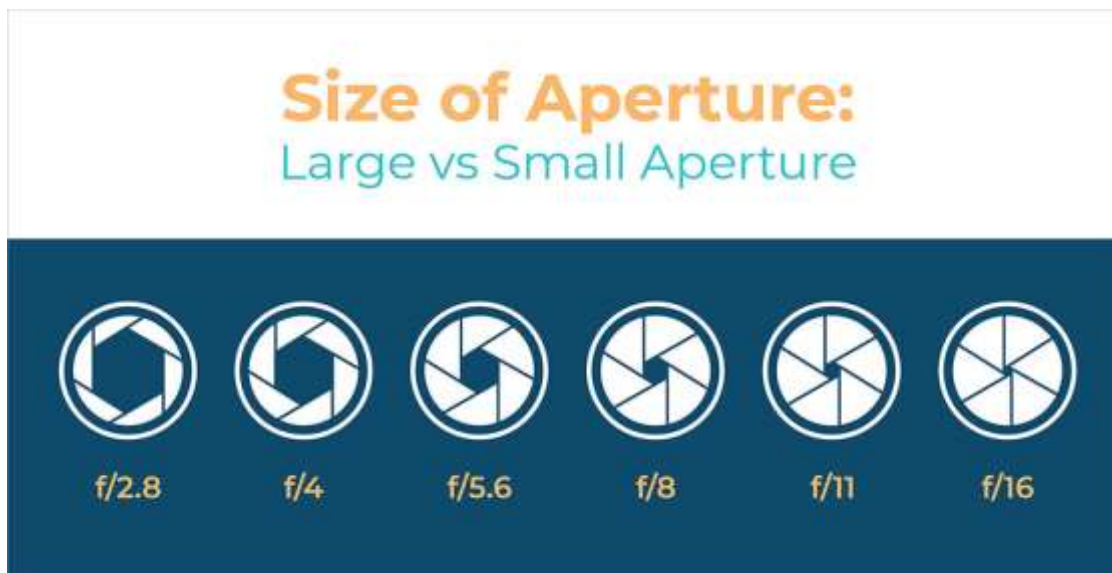
Each lens has an aperture with various lenses. The design of the lens itself determines the range of aperture settings. The CLC-USB provides three methods of setting the aperture.

- #1 The aperture can be forced full open and full closed.
- #2 The aperture can be set in native (internal) lens steps. These steps are in 1/8th of an F-stop. The aperture can be set in absolute or incremental steps.
- #3 The aperture can be set as a F-Stop. F-Stop is specified as 10X the value requested
Example: > ms 180 <CR> = Set F-stop 1.8
Example: > ms 165 <CR> = Set F-stop 16.5

Note : Aperture display status is output as 10X the F-Stop

Example:

Aperture min	: F28	(f/2.8)
Aperture max	: F160	(f/16)
Aperture curr	: F56	(f/5.6)





CLC-USB Commands

The illunis Canon Lens Controller uses a text based interface to command the lens and set parameters. The BAUD rate is fixed to 56,700, 8 bit, no parity. The serial interaction can be operated in the following modes

Quiet Mode : No text is sent by the CLC-USB unless it is commanded by the host.

Normal Mode: (Non Quiet) Camera info and command help is sent on startup

Verbose Mode: This mode sends detailed text data for each command.

Setting Quiet Mode saves the setting in EEPROM and is restored at startup. This allows for a simpler command and control interface to the CLC-USB.

The CLC-USB Normal Mode detects an attached lens and displays the following text at startup:

```
Lens EEPROM state restored
SerialNum: 36022
```

```
Canon EF Commands: '*'=EEPROM, @I2C=0x20/21
Ver: 3 Rev: 3 Lens Auto PowerDown: 10mins 0secs
ls      Lens status
lc      brief status: focal len,Ap min,Ap #steps,Ap max
la      Lens attach
ln      Lens name
ge <#>  Get Info
in      Initialize and open aperture
ad      Print aperture info. brief
da      Print aperture info.
pa      Print aperture position
ma <stop> Move aperture abs. 1/8stop
mc      Move aperture fully closed
mn <pos> Move aperture inc. 1/8stop
mo      Move aperture fully open
ms      Move aperture to f-stop
mf      Move focus incremental
mi      Move focus infinity
mz      Move focus zero
fa <pos> Move focus to abs pos.
fc <pos> Move focus percent
pf      Print focus position
fp      Print focus positions
fs      Print focus steps
lf      focus min,max,cur
pz      Print zoom position
qm <0/1> * Quiet Mode
bw a d  * EEPROM byte write decimal
br a    * EEPROM byte read decimal
ed      * EEPROM dump in HEX
es      * EEPROM save lens state
er      * EEPROM restore lens state
vr      * print version
sn      * print serial number
to      * Get/Set power down time in sec
?       print help
>
```



Lens Info Commands

The CLC-USB detects the attached lens. The “ls” command shows lens info.:

>ls

```
Lens Name (From Lens): EF85mm f/1.8 USM
Prime Lens      : 85mm
Aperture min   : F18
Aperture max   : F226
Aperture curr  : F18
Aperture motor steps : 58
Focus steps    : 1695
Focus Position  : 1692
```

>

When a lens is dynamically detached or attached a message is displayed.:

```
>Lens detached...
Lens attached : EF85mm f/1.8 USM
Lens EEPROM state restored
>Lens detached...
Lens attached : EF85mm f/1.8 USM
Lens EEPROM state restored
>
```



Lens Info Commands Continues

CLC-USB Commands

- Version
- Serial number
- Quiet Mode
- Get Info

Lens Info Commands

- Lens status
- Lens attach
- Lens name
- Lens status register

Aperture Commands

- Initialize aperture
- Print aperture info
- Print aperture position
- Move aperture absolute 1/8 stop
- Move aperture fully closed
- Move aperture incremental 1/8 stop
- Move aperture fully open
- Move aperture to F-stop #

Focus Commands

- Move focus incremental
- Move focus infinity
- Move focus zero
- Move focus to absolute position
- Move focus percent
- Print focus position
- Print focus positions
- Print focus steps
- List focus min,max,current

Zoom Commands

- Print Zoom position

EEPROM Commands

- EEPROM dump
- Write byte
- Read byte
- Save lens state to EEPROM
- Restore lens state from EEPROM



Lens Info Commands Continued

Command: Help (menu)
Syntax: ?
Returns: Table of commands
Description: Returns table of commands and descriptions
Prompt is returned if in normal mode. Nothing returned in quite mode.

Example:

```
?  
Canon EF Commands: '*'=EEPROM  
Ver: 1 Rev: 1  
ls          Lens status  
lc          brief status: focal len,Ap min,#steps,Ap max  
la          Lens attach  
ln          Lens name  
...  
vr          * print version  
gs          * get serial number  
sn          * print serial number  
help or ?  print help  
>
```

Command: Print Version
Syntax: **vr**
Returns: Test Version :<number> Rev ::<number>
Description: Returns internal version information from CLC-USB.
Prompt is returned if in normal mode. Nothing returned in quite mode.

Example:

```
vr <CR>  
Version :3 Rev :3  
>
```

Command: Serial number
Syntax: **sn**
Returns: :<number>
Description: Returns serial number of the CLC-USB
Prompt is returned if in normal mode. Nothing returned in quite mode.

Example:

```
3  
>
```

Command: Quiet Mode
Syntax: **qm <0,1>**
Returns: nothing
Description: Sets quiet <1> or normal <0> mode.
Prompt is returned if in normal mode. Nothing returned in quite mode.

Example:

```
qm 0  
qm 1  
>
```



Lens Info Commands Continued

Command: Get Info
Syntax: **ge <#>**
Returns: CLC-USB internal information
Description: Returns data in the form of a signed integer
Prompt is returned if in normal mode.

Request #'s

```
#define CLCD_SN 0
#define CLCD_LENS_ATTACHED 1
#define CLCD_VER_MAJOR 2
#define CLCD_VER_MINOR 3
#define CLCD_APERTURE_MIN 4
#define CLCD_APERTURE_CUR 5
#define CLCD_APERTURE_MAX 6
#define CLCD_FOCUS_MIN 7
#define CLCD_FOCUS_CUR 8
#define CLCD_FOCUS_MAX 9
#define CLCD_ZOOM_MIN 10
#define CLCD_ZOOM_CUR 11
#define CLCD_ZOOM_MAX 12
#define CLCD_MF_ON 13
#define CLCD_IS_ON 14
#define CLCD_LENS_ID 15
#define CLCD_FNUM_MIN 16
#define CLCD_FNUM_CUR 17
#define CLCD_FNUM_MAX 18
```

Example:

```
>ge 16
18
>
```




Lens Info Commands Continued

Command: Lens status
Syntax: **ls**
Returns: Table of lens status values
Description: Returns all lens data in table format
Prompt is returned if in normal mode. Nothing returned in quite mode.

Example:

```
ls <CR>
Lens Name           : EF 50mm f/1.8 II
Prime Lens          : 50mm
Aperture min        : F18
Aperture max        : F226
Aperture curr       : F32
Aperture motor steps : 58
Focus steps         : 984
Focus Position      : 50
>
```

Command: Lens attach
Syntax: **la**
Returns: nothing
Description: Moves lens focus to find endpoints, sets focus to infinity
Prompt is returned if in normal mode. Nothing returned in quite mode.

Example:

```
la <CR>
>
```

Command: Lens name
Syntax: **ln**
Returns: <string>
Description: Returns lens name if in internal data base
Prompt is returned if in normal mode. Nothing returned in quite mode.

Example:

```
ln <CR>
EF 50mm f/1.8 II
>
```

Command: Lens internal status register
Syntax: **st**
Returns: <string>
Description: AF/MF=Auto/Manual Focus, IS=Image Stabilizer On
F@Stop/FAcell/FMoving/F@Rest = Focus Motor status
A-MotorOn, A@FullOpen = Aperture status

Example:

```
>st <CR>
0x10:AF+F@Stop+F@Rest+A@FullOpen
>
```



Aperture Commands

Command: Initialize aperture
Syntax: **in**
Returns: nothing
Description: Initializes aperture motor and move aperture fully open
Prompt is returned if in normal mode. Nothing returned in quite mode.

Example:
`in <CR>`
>

Command: Print aperture info
Syntax: **da**
Returns: <string>
Description: Returns lens aperture min, max, and current settings
Prompt is returned if in normal mode. Nothing returned in quite mode.

Example:
`da <CR>`
`Aperture min : F18`
`Aperture max : F226`
`Aperture curr : F18`
>

Command: Print aperture position
Syntax: **pa**
Returns: <string>
Description: Returns lens aperture current - min, and current settings
Prompt is returned if in normal mode. Nothing returned in quite mode.

Example:
`pa <CR>`
`0,f18`
>

Command: Move aperture absolute 1/8 stop
Syntax: **ma <stop>**
Returns: <stop>,f<number>
Description: Moves aperture to absolute position in 1/8 stop's
Prompt is returned if in normal mode. Nothing returned in quite mode.

Example:
`ma 22 <CR>`
`22,f47`
>



Aperture Commands Continued

Command: Move aperture fully closed
Syntax: **mc**
Returns: <stop>,f<number>
Description: Moves aperture fully closed
Prompt is returned if in normal mode. Nothing returned in quite mode.

Example:
mc <CR>
58 , f 226
>

Command: Move aperture fully open
Syntax: **mo**
Returns: <string>
Description: <stop>,f<number>
Description: Moves aperture fully open.
Prompt is returned if in normal mode. Nothing returned in quite mode.

Example:
mo <CR>
0 , f 18
>

Command: Move aperture incremental 1/8 stop
Syntax: **mn <stops>**
Returns: <string>
Description: Returns lens aperture min, max, and current settings
Prompt is returned if in normal mode. Nothing returned in quite mode.

Example:
mn -4 <CR>
14 , f 33
>

Command: Move aperture to F-stop #
Syntax: **ms <fstop>**
Returns: <stop>,f<number>
Description: Moves aperture to absolute F-stop. **fstop** is 10x value
Prompt is returned if in normal mode. Nothing returned in quite mode.

Example: Move to f-stop 2.2
ms 22 <CR>
4 , f 21
>

Example: Move to f-stop 11.0
ms 110 <CR>
41 , f 108
>



Focus Commands

Command: Move focus infinity
Syntax: **mi**
Returns: nothing
Description: Moves focus position to infinity focus
Prompt is returned if in normal mode. Nothing returned in quite mode.

Example:
`mi <CR>`
>

Command: Move focus zero
Syntax: **mz**
Returns: nothing
Description: Moves focus position to zero focus
Prompt is returned if in normal mode. Nothing returned in quite mode.

Example:
`mz <CR>`
>

Command: Move focus to absolute position
Syntax: **fa <position>**
Returns: nothing
Description: Moves focus position to absolute position
Prompt is returned if in normal mode. Nothing returned in quite mode.

Example:
`fa 333 <CR>`
>

Command: Move focus incremental
Syntax: **mf <delta position>**
Returns: nothing
Description: Moves focus position incrementally from current position
Prompt is returned if in normal mode. Nothing returned in quite mode.
Negative numbers moves focus towards zero focus.
Positive numbers moves focus towards infinity focus.
Focus motors will stop at end points.

Example:
`mf -55 <CR>`
>



Focus Commands Continued

Command: Move focus percent
Syntax: **fc** <percent>
Returns: position:focus steps
Description: Moves focus position to a percent of full range
Prompt is returned if in normal mode. Nothing returned in quite mode.
Percent is 0.0 to 100.0

Example:
fc 44.4 <CR>
44.40:402
>

Command: Print focus position
Syntax: **pf**
Returns: focus step position
Description: Prompt is returned if in normal mode. Nothing returned in quite mode.

Example:
pf <CR>
511
>

Command: Print focus positions
Syntax: **fp**
Returns: Focus encoder positions (NOTE: Not step position)
Description: Prints focus positions in encoder value
Prompt is returned if in normal mode. Nothing returned in quite mode.

Example:
fp <CR>
Fmin:-913 Fmax:251 current:-402
>

Command: Print focus steps
Syntax: **fs**
Returns: <value>
Description: Prints number of focus steps
Prompt is returned if in normal mode. Nothing returned in quite mode.

Example:
fs <CR>
1164
>

Command: List focus
Syntax: **lf**
Returns: <value>,<value>,<value>
Description: Prints focus values in simple format. (NOTE: Not step position)
Prompt is returned if in normal mode. Nothing returned in quite mode.

Example:
lf <CR>
-913,251,-402
>



Zoom Commands

Command: Print Zoom position
Syntax: **pz**
Returns: <value>, <value>, <value>
Description: Prints Zoom position : min, max, current (Lens is prime if all are equal)
Prompt is returned if in normal mode. Nothing returned in quite mode.

Example:
pz <CR>
50mm , 50mm , 50mm
>

EEPROM Commands

Command: Byte Write
Syntax: **bw <address> <data>**
Returns: nothing
Description: Writes byte to EEPROM, all values are decimal
Prompt is returned if in normal mode. Nothing returned in quite mode.

Example:
bw 200 , 23 <CR>
>

Command: Byte Read
Syntax: **br <address>**
Returns: <value>
Description: Reads byte from EEPROM, all values are decimal
Prompt is returned if in normal mode. Nothing returned in quite mode.

Example:
br 200 <CR>
23
>

Command: EEPROM dump
Syntax: **ed**
Returns: <value>
Description: Reads all bytes from EEPROM (Output is in hexadecimal)
Prompt is returned if in normal mode. Nothing returned in quite mode.

Example:
ed <CR>
EEPROM (HEX address and data):
0: 1 FF 0 0 0 0 0 0 0 FF FF FF FF D 0 1D
10: 3 0 FF FF FF FF FF FF FF FF FF FF FF FF FF FF
20: AF 1 98 3 98 3 D8 3 FF FF FF FF FF FF FF FF
...
3E0: FF FF FF FF FF FF FF FF FF FF FF FF FF FF FF
3F0: FF FF FF FF FF FF FF FF FF FF FF FF FF FF FF
>



EEPROM Commands Continued

Command: EEPROM Save lens state
Syntax: **es**
Returns: string
Description: Saves lens state to EEPROM, lens state is restored on power up
Prompt is returned if in normal mode. Nothing returned in quite mode.

Example:
`es <CR>`
`Lens state saved`
`>`

Command: EEPROM Restore lens state
Syntax: **er**
Returns: aperture position <CR> string
Description: Restores lens state from EEPROM (Aperture and Focus)
Prompt is returned if in normal mode. Nothing returned in quite mode.

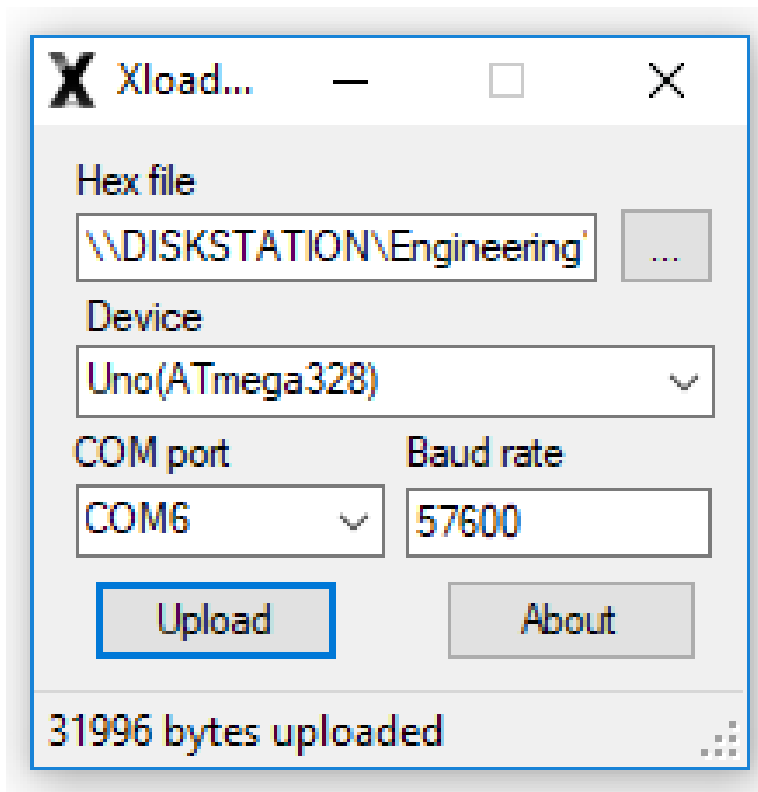
Example:
`er <CR>`
`58,f226`
`Lens state restored`
`>`

Firmware Update

Firmware can be loaded through the USB port using the utility XLoader.exe.

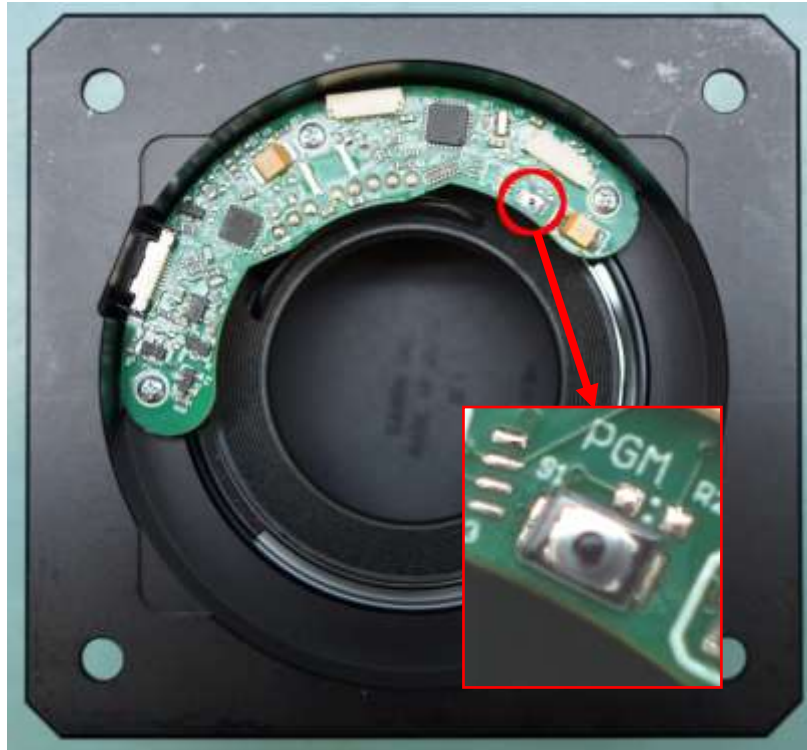
To upload firmware please do the following:

1. Remove lens mount assembly from camera body. Access to the back of the lens controller PCB is required for the firmware update.
2. Attach the CLC-USB to the computer through a USB port
3. Locate the firmware hex file
4. Open XLoader application
5. Select the firmware Hex file
6. Select the Device "Uno(ATmega328)"
7. Select the COM port and baud rate = 57600

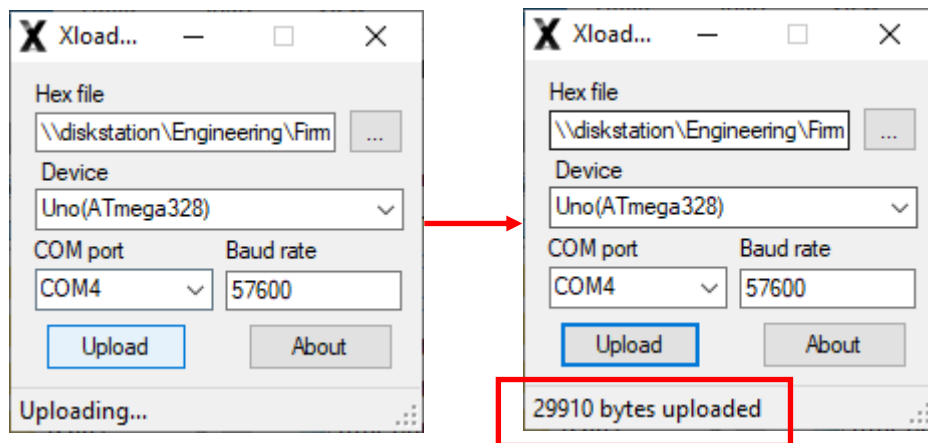


Continued on next page...

Firmware Update Continued...



8. Press and hold the button shown above and click **Upload** on Xloader.
9. The button may be released once the upload has started.
10. Firmware upload is complete when the status changes to xxxxx bytes uploaded.



Firmware Update



Example Lens

The Canon 85mm EF 1:1.8 is shown in this example
on lens attachment, normal (not quiet) mode.

```
Lens EEPROM state restored  
SerialNum: 36022
```

```
Canon EF Commands: '*'=EEPROM, @I2C=0x20/21  
Ver: 3 Rev: 3 Lens Auto PowerDown: 10mins 0secs  
ls          Lens status  
lc          brief status: focal len,Ap min,Ap #steps,Ap max  
la          Lens attach  
ln          Lens name  
ge <#>     Get Info  
in          Initialize and open aperture  
ad          Print aperture info. brief  
da          Print aperture info.  
pa          Print aperture position  
ma <stop>  Move aperture abs. 1/8stop  
mc          Move aperture fully closed  
mn <pos>   Move aperture inc. 1/8stop  
mo          Move aperture fully open  
ms          Move aperture to f-stop  
mf          Move focus incremental  
mi          Move focus infinity  
mz          Move focus zero  
fa <pos>   Move focus to abs pos.  
fc <pos>   Move focus percent  
pf          Print focus position  
fp          Print focus positions  
fs          Print focus steps  
lf          focus min,max,cur  
pz          Print zoom position  
qm <0/1>   * Quiet Mode  
bw a d     * EEPROM byte write decimal  
br a       * EEPROM byte read decimal  
ed         * EEPROM dump in HEX  
es         * EEPROM save lens state  
er         * EEPROM restore lens state  
vr         * print version  
sn         * print serial number  
to         * Get/Set power down time in sec  
?          print help  
  
>
```

Example Lens



Example Lens Continued

Lens status 'ls'

```
Lens Name (From Lens): EF85mm f/1.8 USM
Prime Lens           : 85mm           <- Lens is prime (not zoom)
Aperture min        : F18
Aperture max        : F226
Aperture curr       : F18             <- Fully open
Aperture motor steps : 58
Focus steps         : 1675
Focus Position      : 1675           <- Focus @ infinity
>
```

Move closed 'mc' and Lens status 'ls'

```
Lens Name (From Lens): EF85mm f/1.8 USM
Prime Lens           : 85mm
Aperture min        : F18
Aperture max        : F226
Aperture curr       : F226           <- Aperture reports closed ~ 22
Aperture motor steps : 58
Focus steps         : 1677
Focus Position      : 1677
>
```

Move closed 'mz' and Lens status 'ls'

```
Lens Name (From Lens): EF85mm f/1.8 USM
Prime Lens           : 85mm
Aperture min        : F18
Aperture max        : F226
Aperture curr       : F18
Aperture motor steps : 58
Focus steps         : 1678
Focus Position      : 0              <- Focus reports at zero location
>
```

Version 'vr'

```
Version :3 Rev :3
```

The Canon 100mm EF 80-200mm f/4.5-5.6 USM is shown in this example

```
>
Lens Name           : EF 80-200mm f/4.5-5.6 USM
Zoom Lens min/max/cur: 80mm/200mm/195mm <- Zoom location
Aperture min        : F56
Aperture max        : F281
Aperture curr       : F56
Aperture motor steps : 37
Focus steps         : 9
Focus Position      : 0
>
```



.dll Commands

A .NET .dll is provided to aid in connecting to and controlling the lens. The following commands are supported.

COM Port Commands

Function: `int` PortOpen(`string` name)

Returns: 1 for success -1 for failure

Description: Initialize the COM

Example:

```
Int err = initPort("COM4");
```

Function: `void` PortClose()

Returns: void

Description: Close the COM port connection

Example:

```
PortClose();
```

Focus Commands

Function: `void` FocusCalibrationOnConnect(`bool` Enable)

Returns: void

Description: On some lens models the encoder range can change each time it's attached. This setting must be set before **PortOpen(string name)** or the focus will calibrate. **True** - Moves the lens to 0 and infinity when attached to calibrate controller to the current encoder range. **False** - does not calibrate focus on attach, can be used on lenses with stable encoders.

Default is True.

Example:

```
FocusCalibrationOnConnect(false);
```

Function: `int` GetFocusNear()

Returns: Near Focus value

Description: Returns the Near Focus Value set by initFocus()

Example:

```
Int FocusNear = GetFocusNear();
```

Function: `int` GetFocusFar()

Returns: Far Focus value

Description: Returns the Far Focus Value set by initFocus()

Example:

```
Int FocusNear = GetFocusFar();
```



.dll Commands Continued

Focus Commands—continued

Function: `int SetFocusAbsolute(int focus)`
Returns: 1 for success -1 for failure
Description: Sets focus to absolute position between FocusNear and FocusFar
Example:
`SetFocusAbsolute(240);`

Function: `int GetCurrentFocus()`
Returns: Current focus value
Description: Returns the current focus value
Example:
`Int Focus = GetCurrentFocus();`

Iris Commands

Function: `double GetIrisMin()`
Returns: Minimum Iris Value (Most Open value)
Description: Returns the Minimum Iris Value.
Example:
`double MinIris = GetIrisMin();`

Function: `double GetIrisMax()`
Returns: Maximum Iris Value (Most Closed value)
Description: Returns the Maximum Iris Value.
Example:
`double MaxIris = GetIrisMax();`

Function: `int SetIrisAbsolute(double focus)`
Returns: 1 for success -1 for failure
Description: Sets focus to absolute position between GetIrisMin and GetIrisMax
Example:
`SetIrisAbsolute(1.8);`

Function: `double GetIrisCurrent()`
Returns: Current Iris value
Description: Returns the current iris value
Example:
`double Iris = GetIrisCurrent();`

General Commands

Function: `string GetLensName()`
Returns: Lens Name
Description: Returns Lens Name
Example:
`String Name = GetLensName();`



.dll Commands Continued

General Commands—continued

Function: `string` GetLensStatus()
Returns: Table of Lens parameters
Description: Returns Lens parameters
Example:
`String Status = GetLensStatus();`

Function: `string` GetVersion()
Returns: Lens Controller firmware version
Description: Returns Lens Controller firmware version
Example:
`String Version = GetVersion();`

Function: `void` LensHeartbeat(`bool` Enable)
Returns: `void`
Description: Enables or disables SDK periodic lens presence checks to raise LensPresenceChanged event.
Default: `true`
Example:
`LensHeartbeat(false);`

Function: `event` EventHandler LensPresenceChanged
Returns: `none`
Description: Event is raised when a lens is attached or detached from the controller if LensHeartbeat is set to true.
Example:
`myLens.LensPresenceChanged += LensAttachDetach;`

Function: `bool` LensPresent()
Returns: True if lens attached to controller
Description: Returns current lens status updated by LensHeartbeat. If LensHeartbeat is disabled it will query lens controller.
Example:
`bool LensPresent = LensPresent();`

Function: `string` PortWrite(`string` command)
Returns: returns lens controller response to command (if any)
Description: Used to send any command covered earlier in the guide that does not have a SDK function. Returns lens controller response, "!" for success on commands with no response, "?" for failed or unknown command.
Example:
`string Response = PortWrite("pz");`



illunis Canon Lens Controller

For more information on any illunis product, including detailed specifications and options, please visit our website at **www.illunis.com**, email **info@illunis.com**, or call illunis at the phone number listed below.

illunis LLC
Headquarters
14700 Excelsior Blvd
Minnetonka, MN 55345 USA

Phone: 952.975.9203
FAX: 952.294.8308

www.illunis.com